

# Corporate Profile



# Video Surveillance, Structured Cabling and Networking Solutions that Help our Customers Realize Exceptional Value

## Our Path To Success

For over twenty years, Infinique has strived to support its customers with a spirit of innovation and excellence bundled with a very high level of service. These core qualities form the basis for everything we do at Infinique, empowering us to provide superior products which are future proof.

## End-to-End Solutions Strategy

Whether it is analogue high definition or the scalable network based megapixel video surveillance solutions, Infinique provides excellent product quality and superior design which ensures product performance and reliability. With a complete range of cameras and video management solutions, our customers have the flexibility to deploy our products on projects of any size.

For networks to perform at their peak level you require high performance routers and switches along with a reliable passive backbone cabling infrastructure which should be of top notch quality. Infinique has realized this

important aspect in IT networking and has complemented it with a complete range of high performing network switches and very high quality cables accessories that contribute significantly towards ensuring operational efficiency and reliability of transmitting data, video and voice over the network

## Tailor-made Solutions

We believe in working along with our customers to provide products and solutions that can be customized to work with other systems for efficient and seamless integration.

## Global Presence

Infinique is a Canadian based company that acts globally through its regional offices, representatives and channel partners to provide a local presence to its customers. Our partners regard us as an extension of their team, playing a key role in the go to market strategy. With Infinique's portfolio of highly competitive products, our partners gain a tremendous opportunity to grow their business and broaden the customer base.

Since 2002

Infinique started as designer and manufacturer of video surveillance solutions in 2002, when video was predominantly analog. As our products evolved and transitioned to digital video over IP there was a need for quality network infrastructure with high performance routers, switches and backbone cabling that support bandwidth intensive application. The end result was Infinique providing complete networking solutions to support video applications and beyond.



# Open Architecture to Address Current and Future Security Needs

## Video Surveillance Solution

As the transition to IP based video surveillance is reaching its full potential and providing an opportunity for a more connected and integrated security platform, we at Infinique are consistently striving to deliver the best cameras, video management solution and a middle-ware which helps achieve this goal. Whether you are a small to mid-size company, a major corporation or a government organization, our products are designed to address your security concerns.

### IP Cameras

The IP based network cameras from Infinique are designed with open industry standards for high definition images, reliability, easy deployment and performance. Suitable for today's demanding security video applications our cameras include the essential features required to provide secure video over network.

### Video Management

Infinique's robust network video recorders, servers, and management software addresses the needs of a small to very large installation with thousands of cameras. Some of the high-end features offered but not limited to are open architecture, ONVIF compliance, central storage and fail-over, providing a scalable and future proof solution.

### Analog High Definition

For installations where users want to migrate from analog video to high definition video, Infinique provides a cost effective analog high definition solution with cameras and hybrid recorders that help in easy migration to high definition video in a phased manner.

### nClient Middle-ware Application

Infinique introduces a first of its kind middle-ware for monitoring camera video associated with events generated by systems such as building management, access control and automatic number plate recognition. This software application offers a centralized management of cameras and events using a single client.



# Video Surveillance At a Glance

IP CCTV	Video Management	AHD CCTV	Middle Ware
<p>Cameras</p> <ul style="list-style-type: none"> <li>PTZ Speed Dome</li> <li>Domes</li> <li>IR Domes</li> <li>IR Bullets</li> <li>WDR Box</li> <li>Fish Eye</li> <li>License Plate</li> <li>Elevator</li> <li>IK10, IP66, IP67</li> <li>PoE</li> <li>SD Card</li> <li>Https</li> <li>802.1x</li> <li>1 to 12 MP</li> <li>ONVIF</li> </ul> <p>Accessories</p> <ul style="list-style-type: none"> <li>Lens</li> <li>Controllers</li> <li>Power Adapters</li> <li>Brackets</li> <li>Housings</li> </ul>	<p>Recorders</p> <ul style="list-style-type: none"> <li>Embedded</li> <li>PC Server</li> </ul> <p>Software</p> <ul style="list-style-type: none"> <li>VMS</li> <li>CMS</li> <li>Mobile</li> </ul> <p>Features</p> <ul style="list-style-type: none"> <li>4 to 256 Ch</li> <li>Scalable</li> <li>Centralized</li> <li>Open Architecture</li> <li>Fail-over</li> <li>Zero Downtime</li> <li>PoE Ports</li> <li>RAID</li> <li>iSCSI</li> </ul>	<p>Cameras</p> <ul style="list-style-type: none"> <li>IR Domes</li> <li>IR Bullets</li> <li>WDR Box</li> <li>License Plate</li> <li>IP66</li> </ul> <p>Recorders</p> <ul style="list-style-type: none"> <li>720p, 1080p</li> <li>4, 8, 16 Ch</li> </ul> <p>Accessories</p> <ul style="list-style-type: none"> <li>Lens</li> <li>Power Adapters</li> <li>Brackets</li> <li>Housings</li> </ul>	<p>nClient</p> <ul style="list-style-type: none"> <li>Device Manager</li> <li>BACnet Gateway</li> <li>Event Monitor</li> <li>Access Control</li> <li>Gateway</li> <li>ANPR</li> </ul>

# High Quality Network Backbone Infrastructure for Tomorrow's Bandwidth

## Structured Cabling Solution

Infinique offers an end-to-end copper and fiber solution that meets and exceeds the latest industry standards for data and telecommunication networks and gigabit Ethernet. Our products are designed for reliability, optimal performance of current network infrastructure and provides foundation for future growth.

### Copper Cables

Infinique provides a wide range of copper cables for use in high-speed data transmission and telephony. The cables are UL listed for safety and Intertek ETL verified for performance and meet or exceed the cabling industry standards.

### Copper Components

The copper system product line is complemented with various high quality performing components like patch cords, patch panels, keystone jacks and RJ45 plugs that are used in video, data and voice network infrastructure.

### Accessories

To complement the copper systems product line, we offer face plates, floor brackets, unloaded panels, cable management and enclosures.

### Network Racks

Infinique's Network Racks come in freestanding and wall-mount versions with heights ranging from 6U to 48U. The Network Racks are available in various configurations and used in simple server rooms to complex data centers.

### Fiber Optic Cables

Our fiber optic cabling solution assures superior performance and smooth operation of network reducing the total cost of ownership. The product line includes a complete range of multimode, singlemode FTTH and backbone cables in various constructions, suitable for both indoor and outdoor applications. Infinique fiber optic cables are UL listed for OFCR and OFNR safety standards and are third party certified for performance.

### Fiber Optic Components

Fiber components product line of Infinique comprises of adapters, field connectors, pre-terminated pigtails, patch cords, PLC splitters, micro ODFs, mini ODFs, direct splice cabinets, wall mount cabinets, patch panels, high density chassis, high density splitter cabinets and MPO/MPT solution. All components are factory terminated and fully tested to ensure fast deployment and excellent reliability.

# Structured Cabling At A Glance



Copper Systems	FTTH Solution	Fiber Cable	Fiber Component
<ul style="list-style-type: none"> <li>Cable</li> <li>Category 8.1, 8.2</li> <li>Category 7</li> <li>Category 6a</li> <li>Category 6</li> <li>Category 5e</li> <li>Category 3</li> <li>Components</li> <li>Modular Jacks</li> <li>RJ45 Plugs</li> <li>Patch cords</li> <li>Patch Panels</li> <li>Work Area</li> <li>Face Plates</li> <li>Floor Brackets</li> <li>Cable Manager</li> <li>Brush Panel</li> <li>5 Rings Panel</li> <li>Blank Panels</li> </ul>	<ul style="list-style-type: none"> <li>FTTH Cable</li> <li>2 Core Cable</li> <li>4 Core Cable</li> <li>PLC Splitters</li> <li>Components</li> <li>Adapter</li> <li>Pigtail</li> <li>Patch cord</li> <li>Enclosures</li> <li>Micro ODF</li> <li>Mini ODF</li> <li>Patch Panel</li> </ul>	<ul style="list-style-type: none"> <li>Indoor Cables</li> <li>CLT</li> <li>Tight Buffer</li> <li>SLT</li> <li>Bend Insensitive</li> <li>LSOH</li> <li>Outdoor Cables</li> <li>CLT Armored</li> <li>SLT Armored</li> <li>Cores</li> <li>2C, 4C, 6C, 8C,</li> <li>12C, 24C, up to</li> <li>144 Cores</li> <li>Mode</li> <li>Singlemode</li> <li>Multimode</li> <li>OM1, OM2</li> <li>OM3, OM4</li> </ul>	<ul style="list-style-type: none"> <li>Adapters</li> <li>SC, LC, ST, FC</li> <li>MTRJ, E2000</li> <li>Simplex</li> <li>Duplex</li> <li>Pigtails</li> <li>SC, LC, ST, FC</li> <li>MTRJ, E2000</li> <li>LSOH</li> <li>Patch cords</li> <li>SC, LC, ST, FC</li> <li>MTRJ, E2000</li> <li>LSOH</li> <li>Simplex</li> <li>Duplex</li> <li>1,2,3 M</li> <li>Enclosures</li> <li>Wall Mount</li> <li>Rack Mount</li> <li>Patch Panels</li> </ul>

## Network Racks

<ul style="list-style-type: none"> <li>Types</li> <li>Free Standing</li> <li>Wall Mount</li> <li>Height</li> <li>6U to 48U</li> <li>Width</li> <li>600, 800 mm</li> <li>Depth</li> <li>600, 800, 1000 mm</li> </ul>	<ul style="list-style-type: none"> <li>Doors</li> <li>Glass, Metal, Lockable, Removable Side Door</li> <li>Mounts</li> <li>Castors, Legs</li> <li>Others</li> <li>Vented Top Panel, Thermometer, Vertical Cable Manager,</li> <li>Fan Trays, Horizontal or Vertical PDU, Top &amp; Bottom Cable Entry</li> <li>Packing</li> <li>Flat Pack, Welded</li> </ul>
---	--

Available in different types under DN, EN and CN Series.

# Designed for Guaranteed Performance

## Active Network Solution

The evolution of Power over Ethernet technology integrated with the Network Switches has become the de facto standard to create IP networks that transmit data and at the same time power the electronic devices connected. We at Infinique offer a complete range of network switches that are compatible and designed to meet the high performance demands for today's video and data solutions.

## Network Switches

From the Access or Edge switch which connects to the devices such as PCs and IP cameras directly, to the Aggregation or Distribution switch which bridge the Access switch with the Core switch, Infinique has the complete product range to cover the entire spectrum of applications from Data centers, Enterprise or Campus to Small and Medium businesses.

## PoE Network Switches

Infinique's active network switches with PoE are designed for Video Surveillance application and power IP cameras eliminating the need for additional power sources. These are available as plug-and-play unmanaged type, and or as managed type which could easily setup different L2 or L3 layer features through the web admin.

## Routers

Infinique's routers provide secure way to connect the businesses to the outside world over the internet. These routers analyze data that is transmitted over the network and repackage it to bridge one type of network with another.

Routers provide security features such as a firewall by analyzing the incoming and outgoing traffic and protect your network against any cyber attacks.

## Industrial Switches

Our Industrial switches or media convertors help install IP based equipment outdoors and connect them to the Ethernet network. The switches are available as managed as well as unmanaged plug and play type, and suitable for both indoor and outdoor installations.

## M2M Gateways

Infinique's M2M Gateway provides a bridge between a locally connected network device and a wired or wireless device. It creates a secure network node that bridges a WAN to a local wireless network. Our high quality robust M2M products will help provide reliability to your applications which capture raw local data and turn it into useful information.



# Network Switches At a Glance

## Network Switches

Wired  
Layer 2, Layer 3  
Managed  
Unmanaged  
Access or Edge  
Aggregation  
Distribution  
Core Switch  
RJ45, SFP, SFP+  
Campus Switches  
Core  
Aggregation  
Access  
Wireless  
Campus Wi-Fi  
Access Controller  
Access Point  
Cloud Wi-Fi  
Internet Gateway  
Access Point  
Data Center  
Spine/Leaf Switch

## Industrial Switches

Wired  
Layer 2, Layer 3  
PoE Switches  
PoE (IEEE 802.3af),  
PoE+(IEEE 802.3at),  
PoE++ (IEEE 802.3bt)  
Managed  
Unmanaged  
IP40

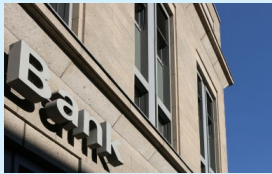
## Routers & Gateways

Wired  
Access or Edge  
Aggregation  
Distribution  
Core  
Wireless  
5G  
4G M2M Gateways

# Solutions that Cover a Wide Range of Applications

Infinique's video surveillance and structured cabling products come in various configurations that can be installed in different applications to help achieve security, loss prevention, remote monitoring and high performance in video, data and telecom networks.

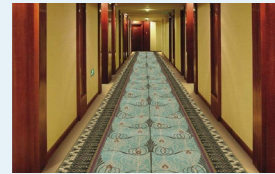
Our products have been successfully installed in shopping centers, banks, hotel, hospitals, educational campuses, industrial facilities, commercial, residential and retail.



Finance



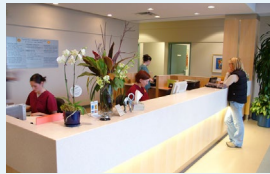
Retail



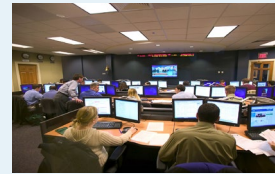
Hospitality



Government



Healthcare



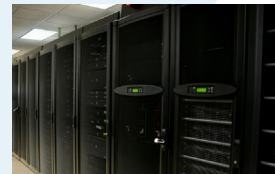
Education



Critical Infrastructure



Residential



Data Center

# With Quality Par Excellence you have a Clear Choice

## Quality Management

Our consistency in quality management processes guarantee the steady improvement of products through a more efficient planning of product life cycle and design resulting in high quality products. Our quality philosophy is reflected in recognized certifications such as EN ISO 9001:2015.

## Standards and Certifications

Infinique's network video cameras and video management systems are designed and developed as per ONVIF which has become a defacto video surveillance systems. The camera and recorder hardware are manufactured with CE and FCC compliance for electro magnetic immunity.

All passive network cabling products manufactured by Infinique are consistently rated higher in performance and overall value by industry installers due to its stringent quality control procedures that assure all products have been inspected and

tested to comply with strict TIA/EIA standards and certified by ETL, EC for performance and by UL, EC for safety.

## Continuous Improvement

Making product and performance improvement is a perpetual objective at Infinique. We are constantly introducing incremental changes in both manufacturing and business processes in order to improve quality and efficiency.

## Customer Focus

Infinique's team constantly engages with its customers to deepen our understanding about their needs and forge long-term partnerships to serve them better. We regularly provide our customers with the technical knowledge, project design and estimation to help them make informed decisions and win business.



# The Infinique Advantage

## Customer Focus

Infinique's commitment to customers does not stop with providing products and technology, it continues to evolve and aims to earn the trust of its customers by adapting a corporate culture that prioritizes on nurturing customer relationships, by providing timely support.

## Product Approvals

Our products are certified for industry standards and are approved by local regulatory authorities. We have gained reputation for offering quality products and a large number of consultants have approved our products which have been used in projects in the markets we operate.

## Distributor Network

Our products are offered by a network of distributors, dealers and system integrators who add value to the supply chain, logistics and installation support.

## Technical Support

We provide both pre and post sales technical support. Our engineers offer technical and expert advice from the early design stage up to system installation. We also help our customers with commissioning support and software tools to perform their installation in a quick and efficient way.

## Training

To add value, we regularly provide training programs to our channel partners on new and existing products, along with design and installation guidelines. In addition, we offer authorized certification program to our channel partners for gaining technical excellence in technology and our products.

## Research and Development

Infinique continues to innovate and improve its product lines, supporting software tools and applications which are designed and developed by an efficient team of engineers at its development centers.

## Return Material Authorization

The RMA process at Infinique provides swift handling of material returns or repairs. All RMA requests are handled within 24 hours of reporting to provide faster service and support to our customers.

## Warranty

All our products come with standard industry warranty to provide peace of mind to your investment. Our network video surveillance products carry 3 years warranty while analog CCTV products have 1 year warranty. Our structured cabling product line of both copper and fiber systems come with a 25 years end-to-end link performance warranty.

# Taking Responsibility for a Better Tomorrow

Infinique places top priority on human life, health, safety, recycling and preservation of environment, and endeavor to contribute in reducing the carbon foot print and takes ownership in providing solutions to the problems faced by global warming. Some of the initiatives we adhere to as part of our corporate social responsibility policy are listed below.

## Paperless Transactions

Be it a quote, delivery order, invoice, purchase order, we go paperless wherever possible, thus reducing our paper requirements and creating a substantial reduction on emissions.

## Reuse and Recycle

At Infinique, we believe in reuse and recycle of material, be it copper, steel, plastics, cardboard, pallets and paper. By recycling we reduce our waste to landfill and by reusing we reduce the carbon emissions used in the manufacture of the resources.

## Logistics

We consolidate our shipments and our first preference in shipment mode is by sea. Majority of our sea shipments are consolidated and brought in container, this helps us reduce our emissions caused by air freight.

## Environmentally Conscious Design

Infinique provides high density fiber solutions for a typical installation as well as data centers. Our high density solution uses 65% less material compared to traditional data center cabling. Reduced dimensions and improved cabling density improves the airflow around the racks, helping to improve cooling and reduce energy consumption.





**Infinique Worldwide Inc.**  
Ontario, Canada  
Tel: +1-905-766-3705  
Toll Free: +1-844-332-2288  
Email: sales@infinique.com

**Infinique Middle East FZCO**  
Dubai, United Arab Emirates  
Tel: +971-4-3926-330  
Email: sales.me@infinique.com

© 2025 Infinique Worldwide Inc. Infinique, Fortes and nClient are registered trademarks or trademark applications of Infinique Worldwide Inc. Canada. All other company names and products are trademarks or registered trademarks of their respective companies.

This document is protected by copyright and distributed under licenses restricting its use, copying, distribution and recompilation. No part of this document may be reproduced in any form by any means without prior written authorization of Infinique and its licensors. Information contained in this document is valid and correct at the time of its publication.

[www.infinique.com](http://www.infinique.com)